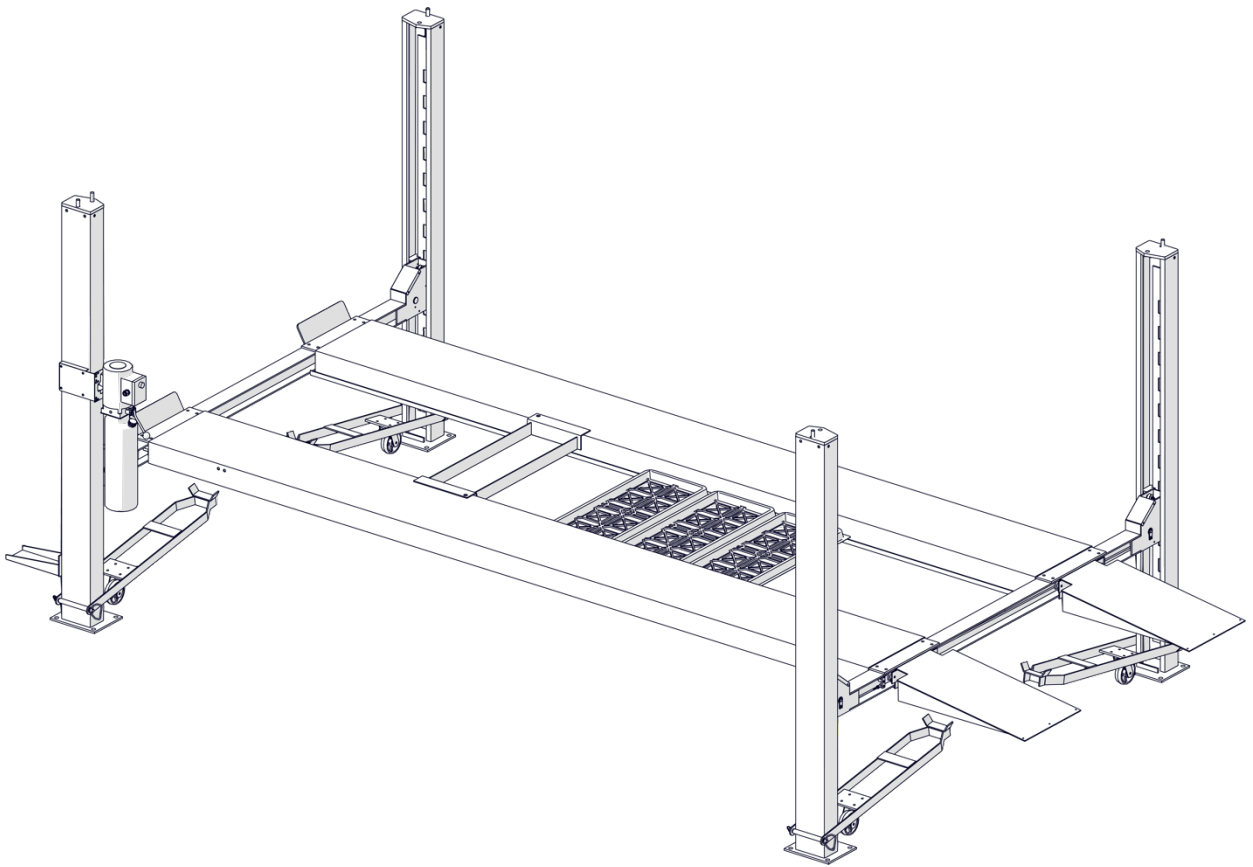


# NSS-10C-G Manual



## Special Note

▲ Shipping process caused damage to the equipment by the purchaser claims to the carrier unit.

▲ Design and manufacturing, taking into account the safety performance. However, proper training and careful operation can also increase security. Not reading the manual, shall not operator repair the device.

▲ To identify the requirements of the motor nameplate power, current status, must be professionally qualified electrician electrical connection.

▲ To ensure that the life safety and to avoid electric shock accident occurred, to ensure reliable grounding of all ground.

▲ The anger of the local structure of the product improvement without notice. Under no obligation to update on previous sales of the product.

▲ Please read and fill out the last page of this manual, warranty card, and feedback to the dealer and the Company for the record. For providing one of the basis of after-sales service. Otherwise regarded as a waiver of the right to enjoy the same services at your own risk.

▲ Shall enhance more than the rated lift-off weight ( 10,000 lbs / 4.5 tons) load.

▲ Reading devices on the warning signs carefully.

# Table of Contents

- Equipment performance
- The basic parameters
- Equipment Dimensions
- The installation of equipment
- Equipment debugging
- Equipment maintenance and inspection
- Parts of the device exploded view and schedule
- Hydraulic system equipment and electrical component
- Common troubleshooting method
- Packing list

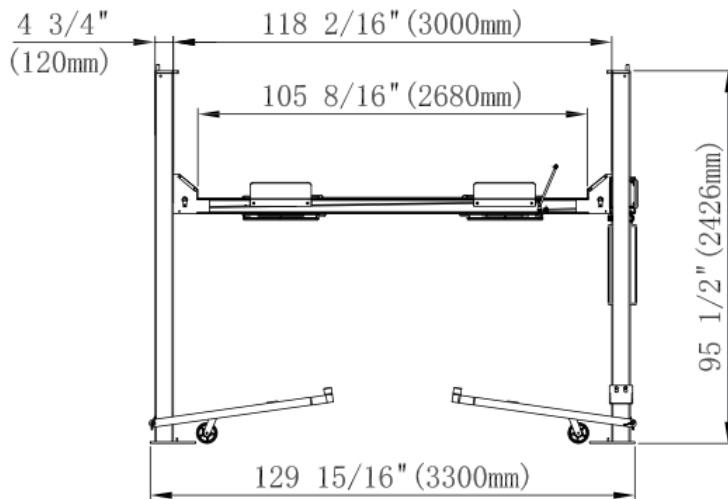
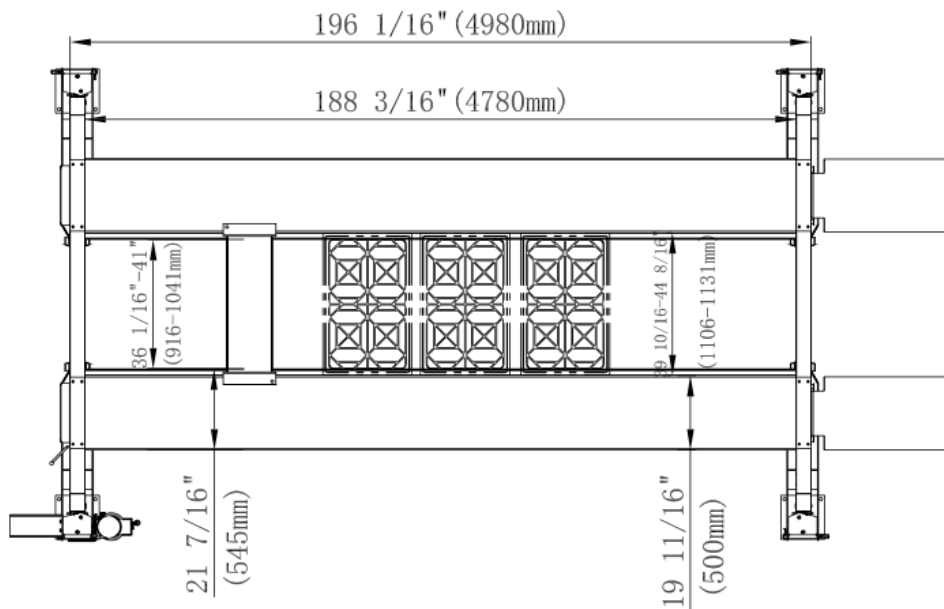
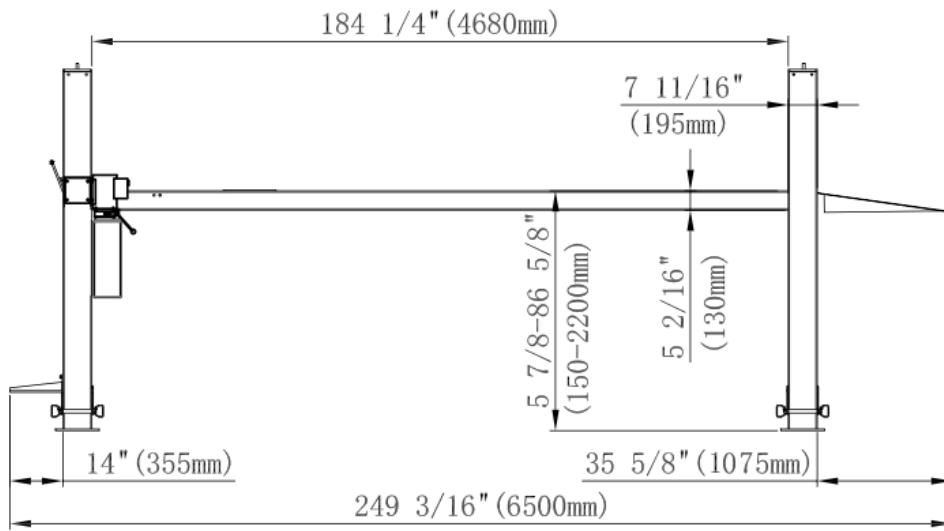
## Equipment performance

- Set inspection, maintenance, parking as a whole, and beautiful appearance.
- Hydraulic cylinders drive, rope drive, quiet working environment.
- Mechanical safety lock, can any of the top job at the desired height, safe and reliable.
- The levelness of concrete slab in the locked position can be adjusted to meet the needs of the precise wheel alignment.
- Install the special wheelset make single people move equipment easy when no-load.

## Basic parameters of the equipment

- Lifting weight: 10,000 lbs / 4.5 tons
- Lifting height: 86.6" / 2,200 mm
- Min height: 5.9" / 150 mm
- Runway Length: 196" / 4980 mm
- The runway width: 19.6" / 500 mm
- Runway Inside Pitch: 43.5" ~ 44.5" / 1,106 ~ 1,131 mm
- Power supply: 110V 60Hz 1Ph

# Dimensions of machine



# Equipment installation

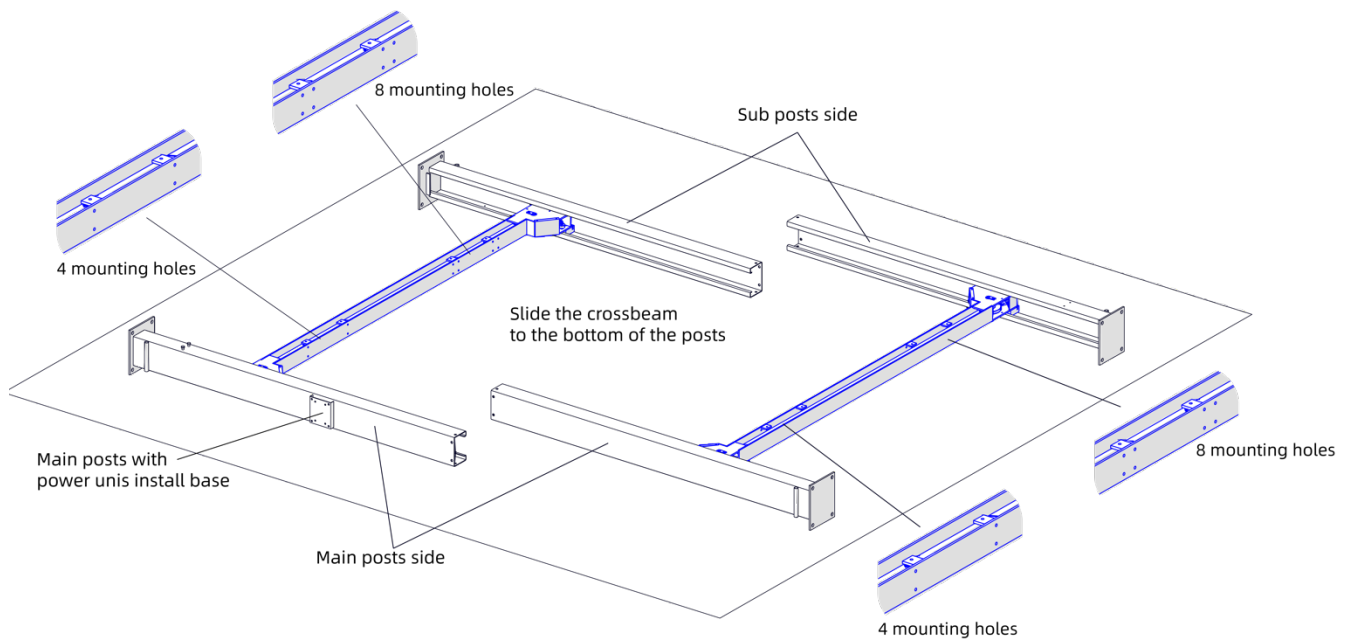
Step 1. Before installing the new lift, pay attention to the following matters:

- (1) The location of the lift, according to the design and planning of the entire plan requirements, as far as possible, place the dimension there is sufficient space.
- (2) According overall size , determine the installation location and carry out the dash.
- (3) Make sure the ground does not have any defects to ensure that the basis of concrete strength of 3000psi (2.1kg/mm <sup>2</sup>)
- (4) Open the box to check whether the missing pieces and transport damage.

Required by the packing list.

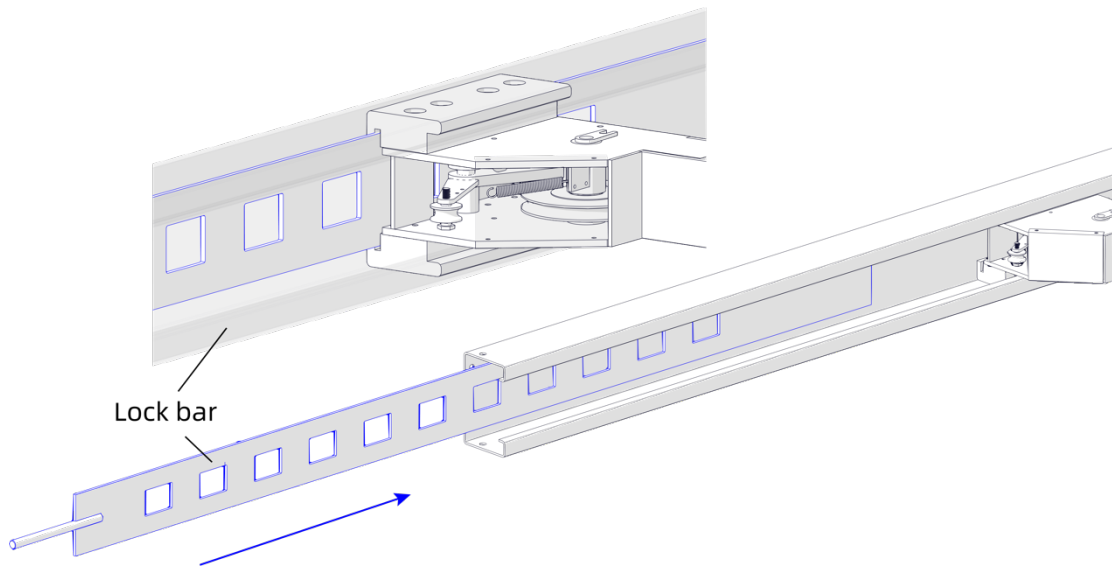
Step 2. To install the crossbeams.

- (1) Pay attention to the **4 mounting holes** on the crossbeam near the **main posts** side, and the **8 mounting holes** on the side of the **sub posts**.



# Triumph Auto Lifts

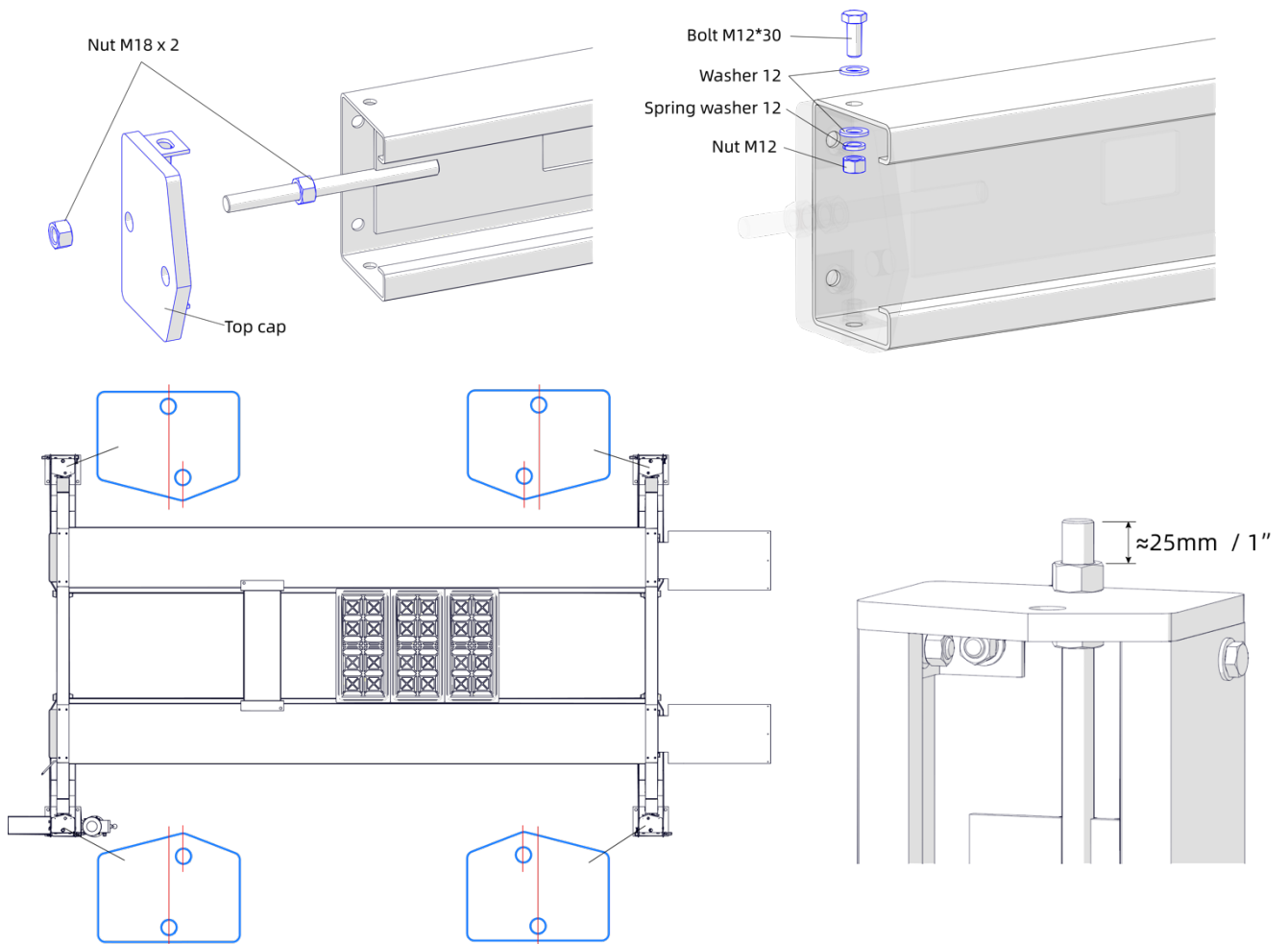
Step 3. To install four lock bar



Step 4. To install top cap.

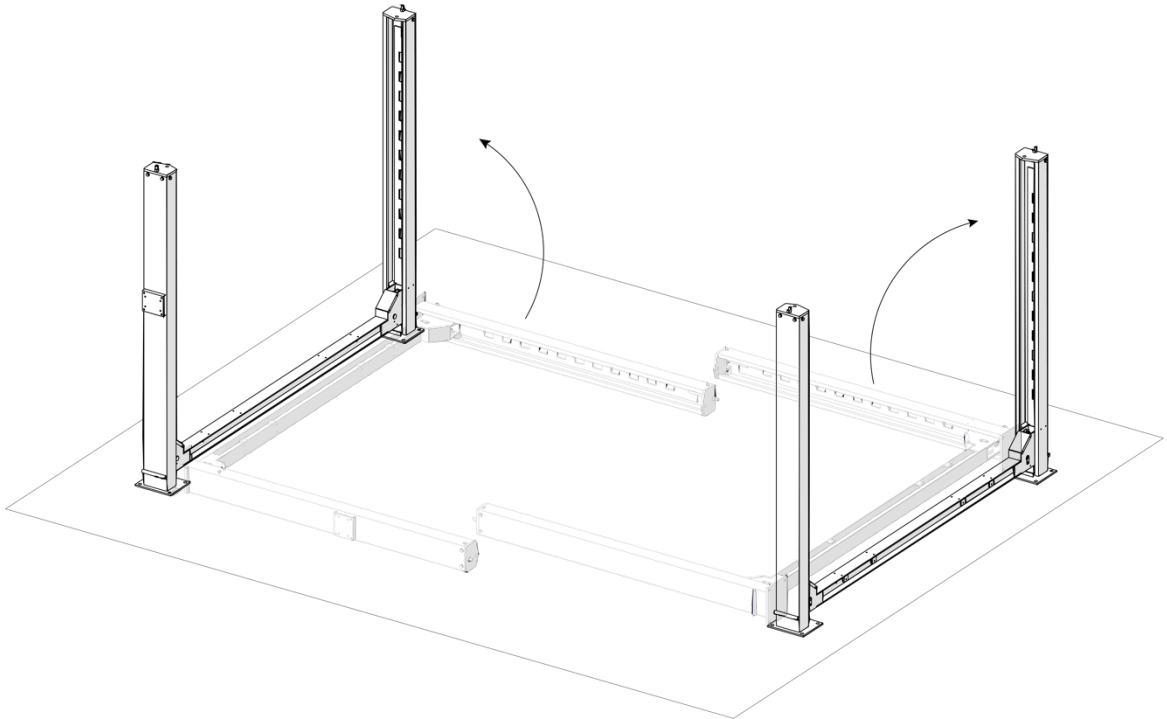
(1) Pay attention to distinguishing the direction of top caps.

(2) The installation height of the lock bars on the 4 pillars is consistent.



## Triumph Auto Lifts

Step 5. Rise the posts and crossbeams.

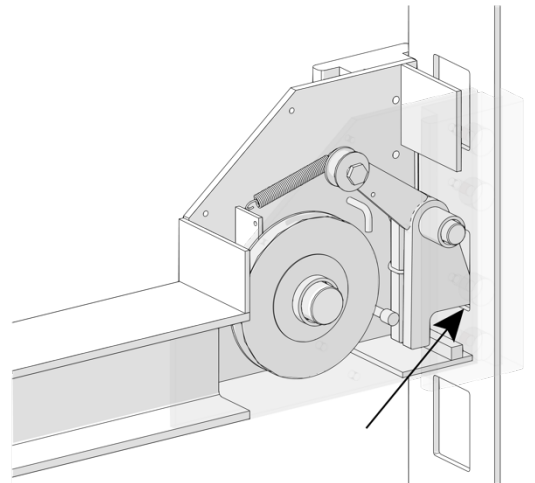
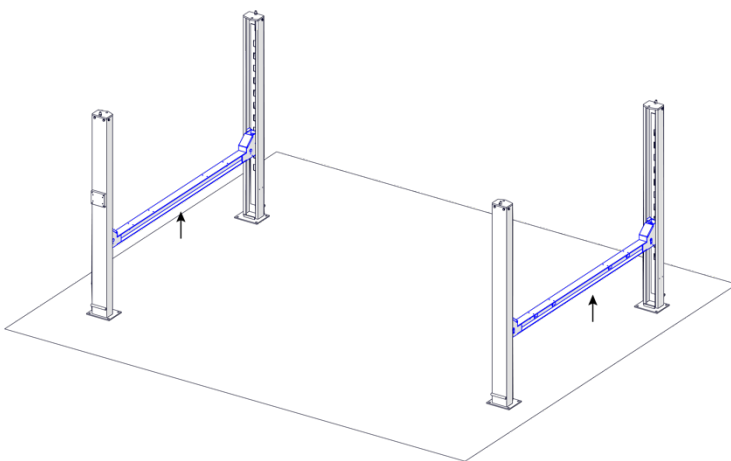


Step 6. Rise the crossbeams

(1) Using a forklift or crane to at least five feet off the ground.

(2) Make sure all 4 safety locks on both sides of each crossbeam are locked

inside the lock bars at the same height.

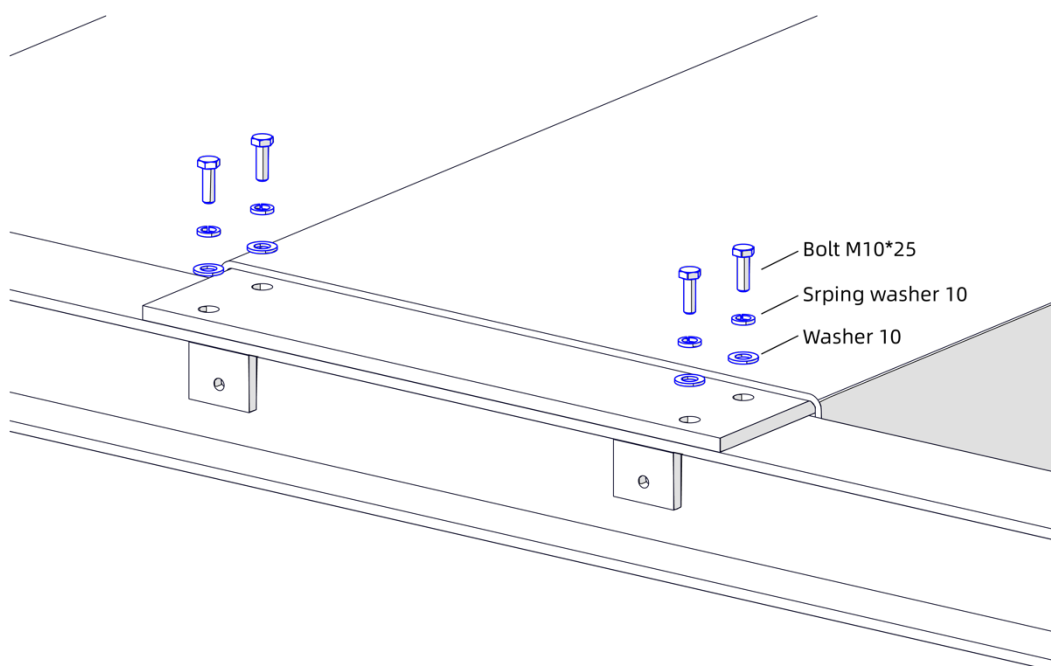
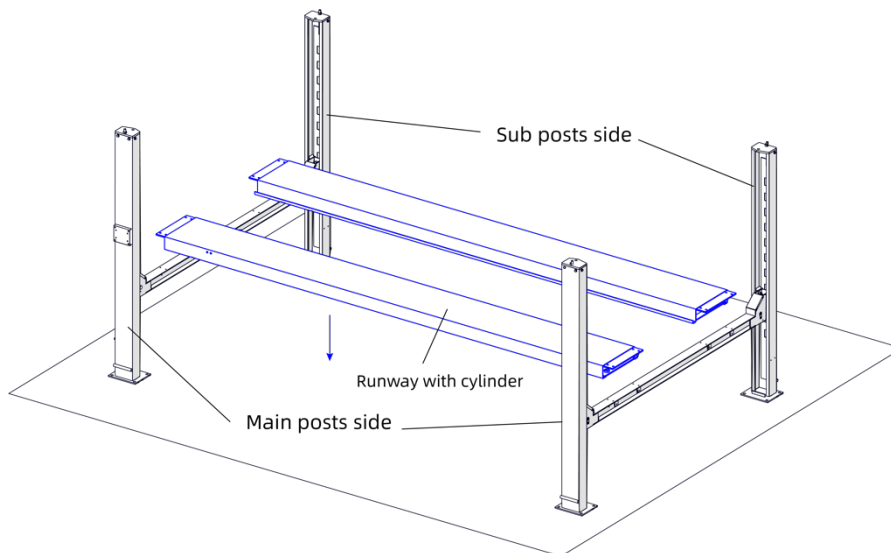




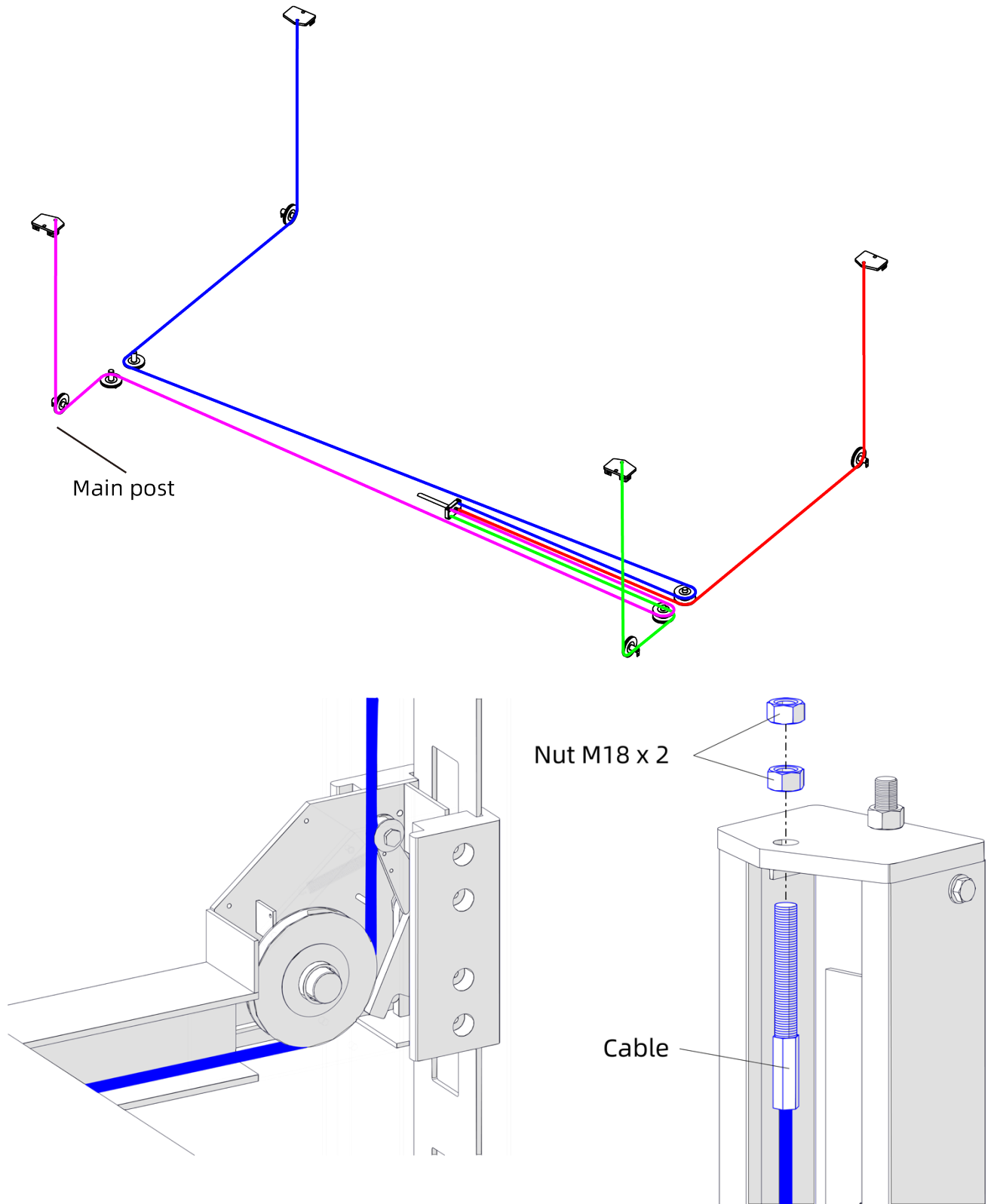
## Triumph Auto Lifts

Step 7. To install the runways

- (1) **Main runway with cylinder:** Using a forklift or crane install the runway to near the **main post side**.
- (2) **Sub runway without cylinder:** Using a forklift or crane install the runway to near the **sub post side**.
- (3) Select the corresponding screw hole positions as needed when installing the sub runway.



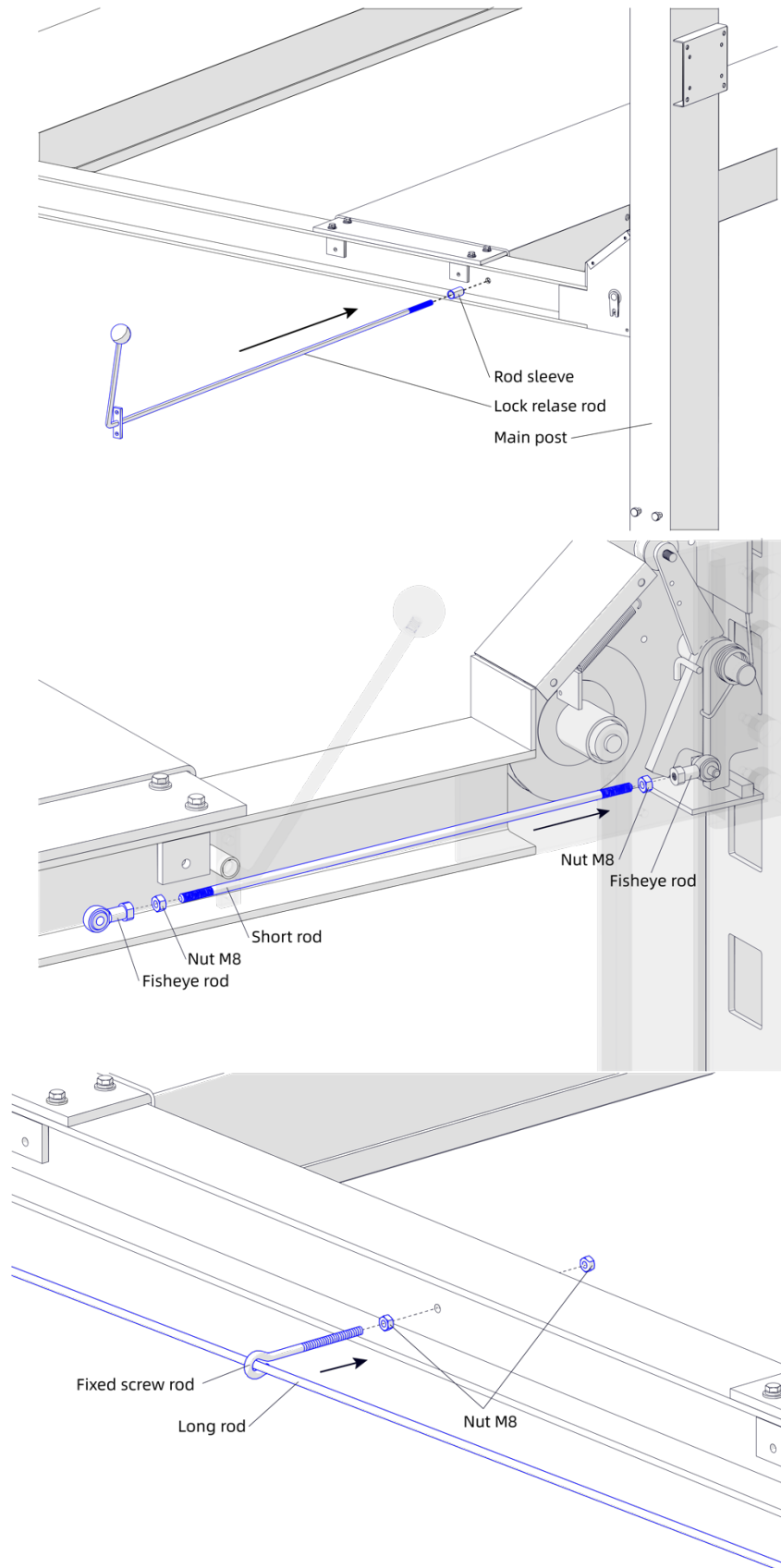
Step 8. To Install the cable



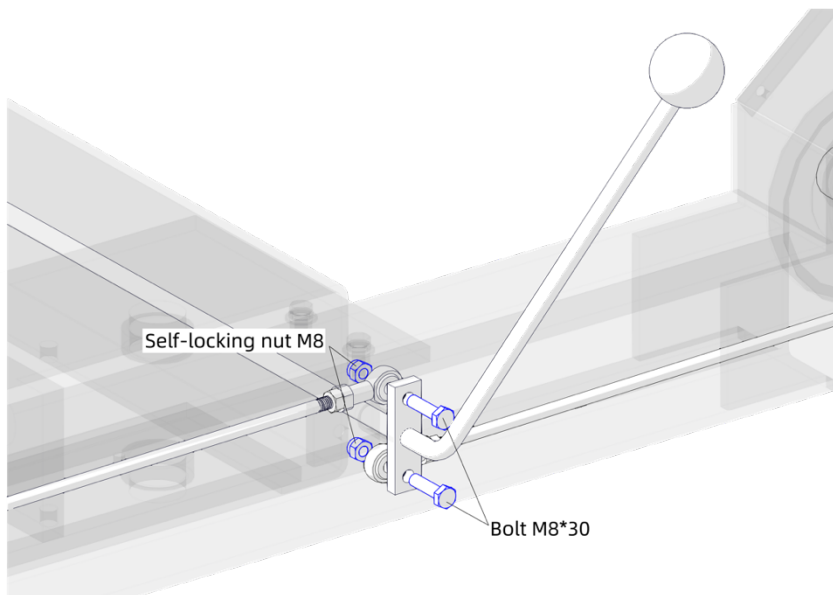
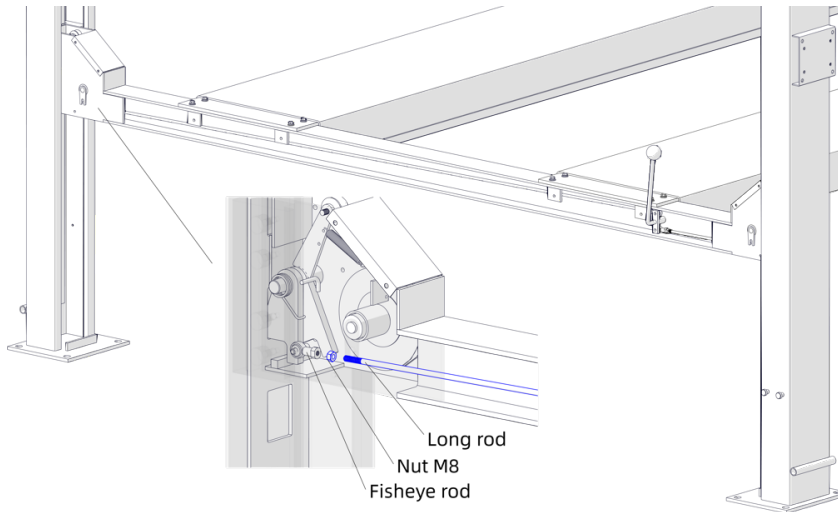
# Triumph Auto Lifts

Step 9. To install the lock release rod

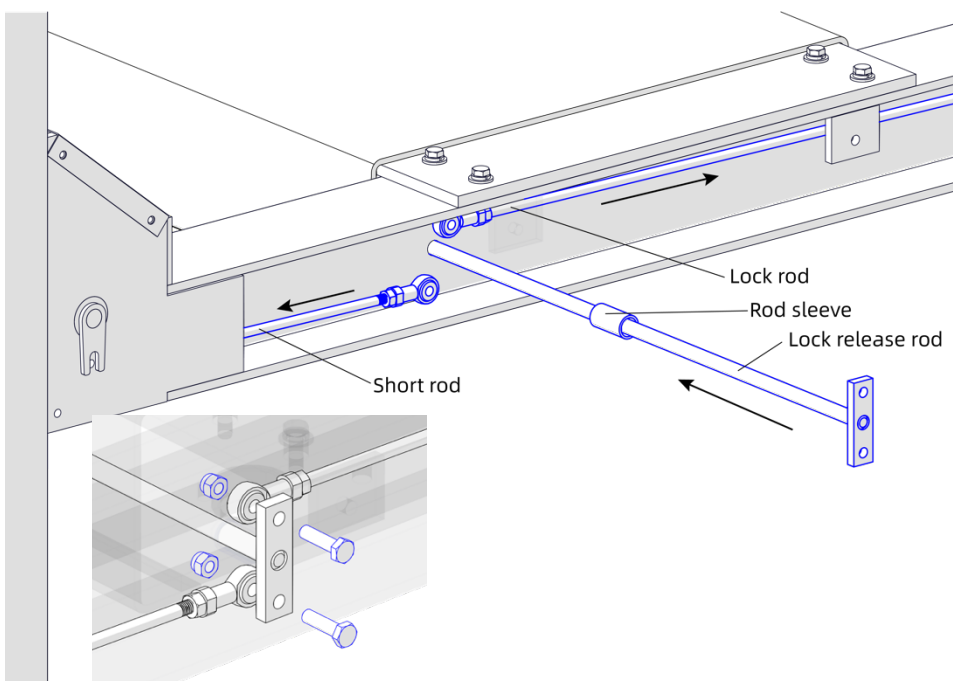
(1) Control side crossbeam



# Triumph Auto Lifts



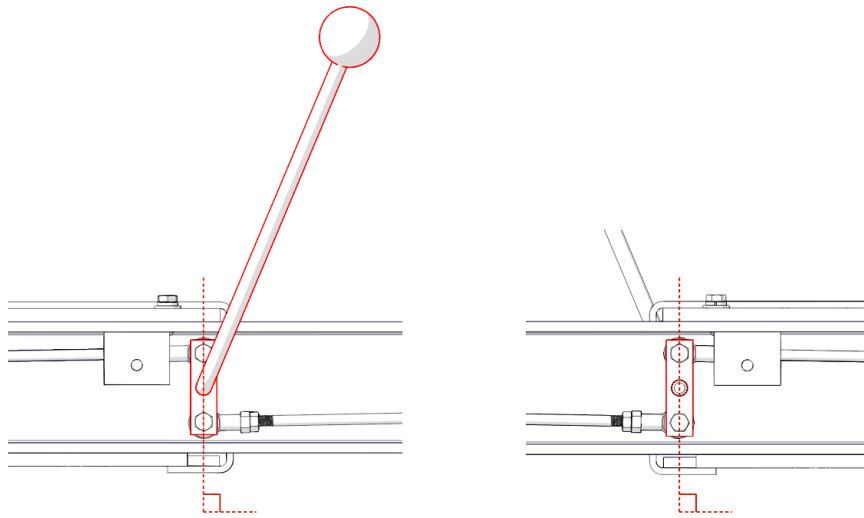
## (2) Slave side crossbeam



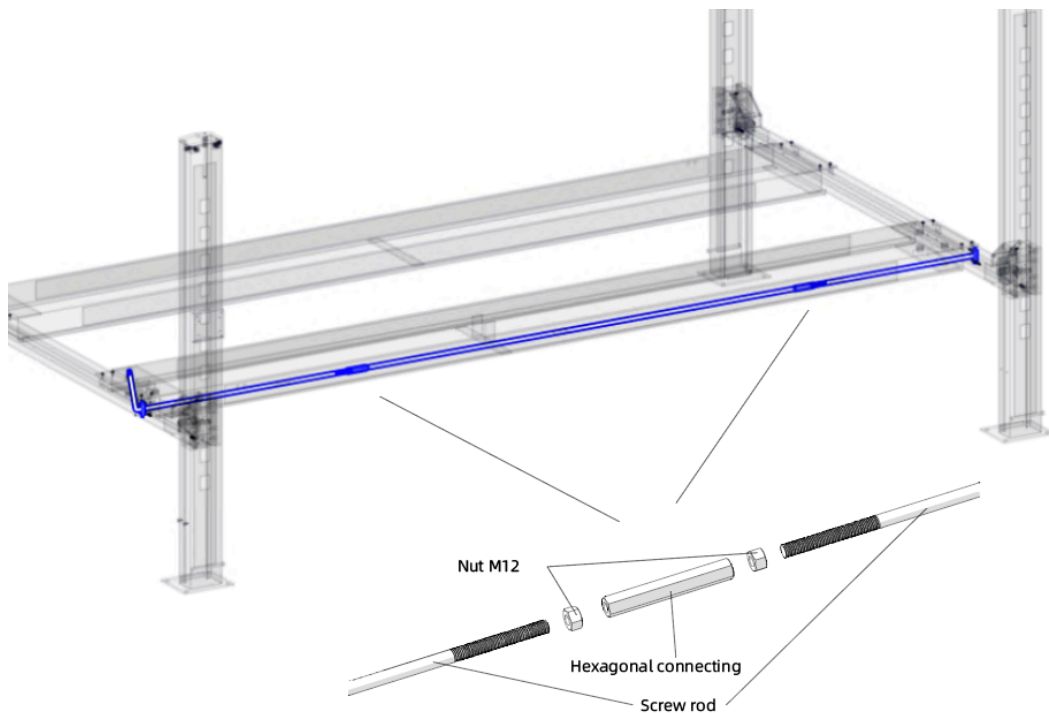
## Triumph Auto Lifts

### (3) Attention:

- i. Make sure all 4 safety locks on both sides of each crossbeam are locked inside the lock bars at the same height.
- ii. After using self-locking nut M8 and bolt M8\*30 to fix the lock release rod, Adjust by rotating the threads of the long and short rods to ensure the lock release rod is vertically.

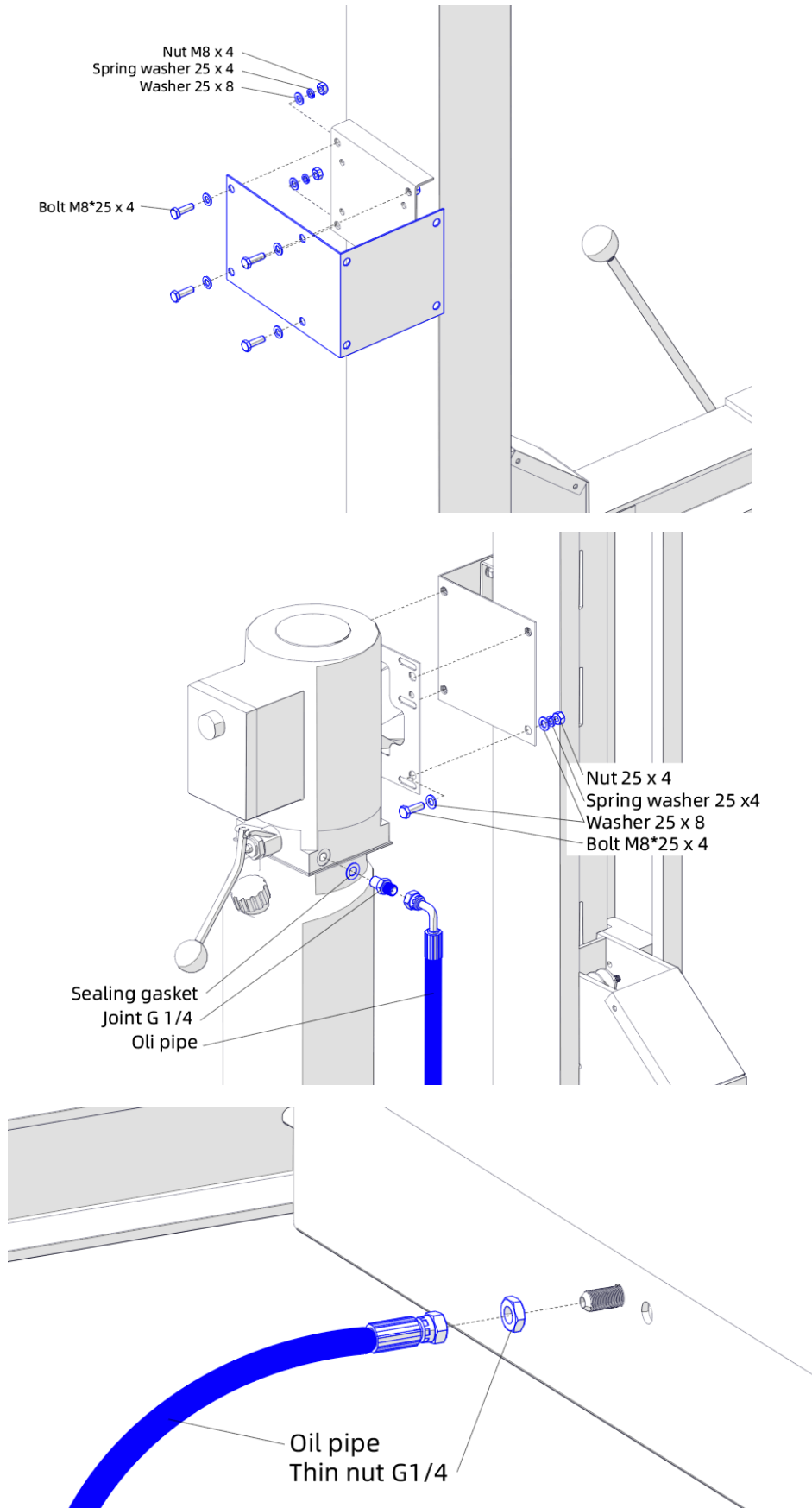


### (4) Connect the lock release screw rod.



# Triumph Auto Lifts

Step 10. To install the power unit and pipe line joints.



## Triumph Auto Lifts

Step 11. The power supply according to the requirements on the motor nameplate, add hydraulic oil.

Step 12. Press up button on power unit, observe the correct cable position. press the down handle on the power unit to decreased to the lowest point, adjusting the tension of the cable, the four unanimously.

Step 13. Install all plastic plate .

Step 14. Install wheel stop plate and up ramp.

## Special attention

- Vehicles parked on the runway braking and tire wedge.
- Lifting and lowering vehicles, pay attention to people and things around to keep their distance and not close to the lift.
- Maintenance man to enter the work area, check the runway should be properly locked in the column lift.
- Four column installation should be vertical to the ground plane, otherwise be dangerous to use!
- Decline before the operation must be the first point of action to rise a little, so that the lock block to leave the lift bar square hole in order to decline. Otherwise it will cause damage to the control mechanism



# Maintenance and inspection notes

## Routine maintenance and inspection

1. Work location of an operation to check the safety lock
2. Check safety lock and unlock the lift bar and padlock
3. Check hydraulic fittings, hose leaks
4. Check the wire rope connections - is bent, broken, loose.
5. Check the wear of the wire rope lifting process.
6. Check all retainer connection must be reliable connection.
7. Check all bolts, nuts, screws connection - found loose shall immediately tighten
8. Check wires and switches for damage.
9. Check expansion bolts around the foundation strength.
10. After the lift is put into use, oil refers to the gun at least once a year or at regular intervals on the cable axle lubrication

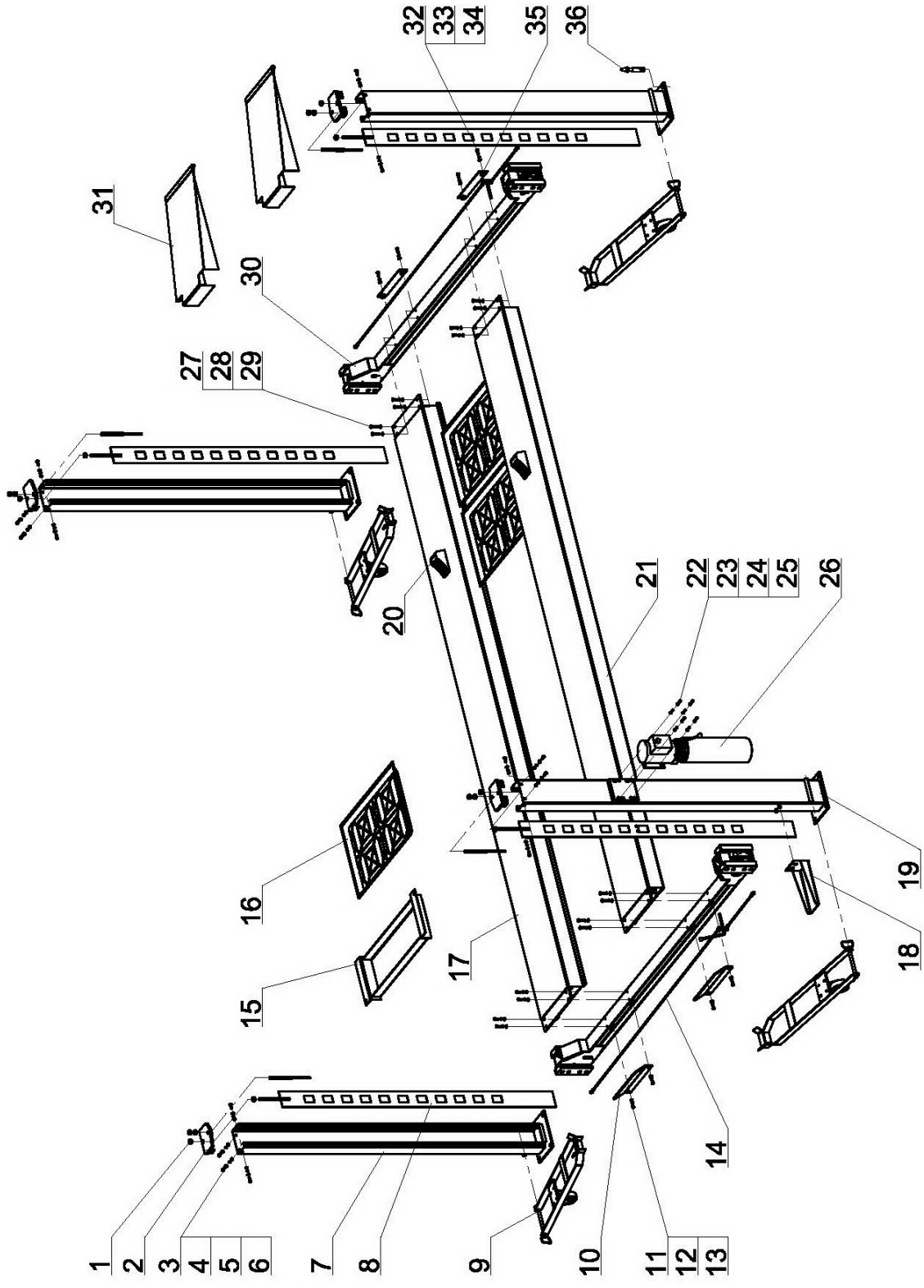
## Weekly maintenance and inspection

1. Check the bolts strength and connections found loose, tighten immediately
2. Inspection inflation bolt around the foundation strength
3. Check the hydraulic oil liquid level
4. Check and tighten loose bolts, nuts, screws
5. Check all embrace round and embrace the axle with
6. Lubricate the cable wheel and cable axle
7. Check the wire rope wear, severe wear and tear be replaced immediately
8. Replace the hydraulic oil.

Trouble shooting

No.	Symptom	Eliminating methods
1	A motor does not turn	<ul style="list-style-type: none"> <li>● check the power supply has power</li> <li>● Check the motor connection box wiring is loose</li> </ul>
2	motor rotation position of pressure oil	<ul style="list-style-type: none"> <li>● One-phase electric rotating in the wrong direction, swap in which two into line.</li> <li>● Check that the fuel tank suction tube is off</li> </ul>
3	Hydraulic lift after the slow decline in(Pressure bad)	<ul style="list-style-type: none"> <li>● cleaning one-way valve and reversing valve of the hydraulic station.</li> </ul>
4	Security lock laughs at locksmith	<ul style="list-style-type: none"> <li>● observe the position of locksmith security hook plate is normal.</li> <li>● observed the location of column is correct.</li> <li>● Check the return spring safety hook plate</li> </ul>
5	motors, electrical failure	<ul style="list-style-type: none"> <li>● Promptly cut off the power to inspect, repair and replacement by a professional electrician..</li> </ul>

# Parts list



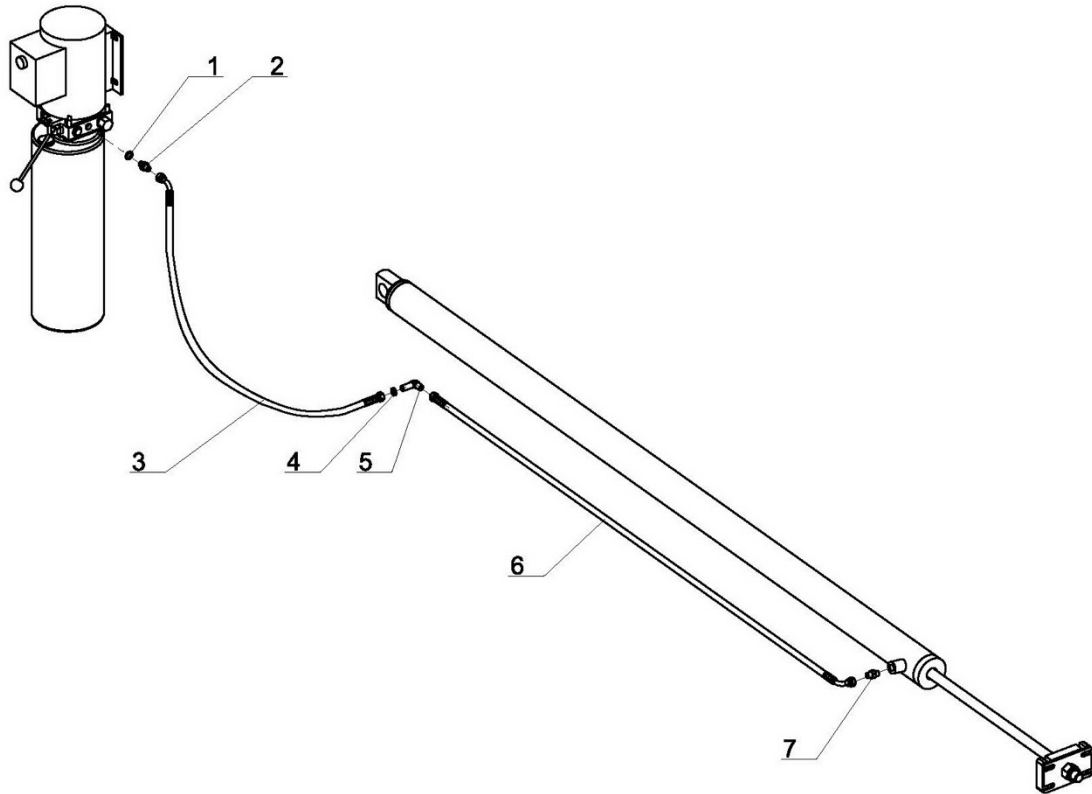
### Triumph Auto Lifts

#	Name	Code	QTY.
1	Nut M18	GB/T 6170	8
2	Column top plate	ON-7440PB-010-00	2 each
3	Bolt M12 × 30	GB/T 5781	16
4	Nut M12	GB/T 6170	16
5	Flat pad 12	GB/T 95	16
6	Spring pad 12	GB/T 93	16
7	Auxiliary pillar	ON-7440PB-200-00	3
8	Self-locking plate	ON-7440PB-020-00	4
9	rack truck	ON-7440PB-600-00	4
10	Wheel chocks	ON-7440PB-000-06	1
10	Wheel chocks	ON-7445PB-000-06	1
11	Bolt M10 × 25	GB/T 5781	4
12	Flat pad 10	GB/T 95	4
13	Spring pad 10	GB/T 93	4
14	Unlocking rods		1
15	Jack bracket	ON-7445PB-030-00	1
16	Drip Pan	ON-7436P-070-00	3
16	Drip Pan	ON-7445PB-070-00	3
17	Sub platform	ON-7445PB-300-00	1
18	Foot pedal bracket	ON-7436PBL-110-00	1
19	Main column	ON-7440PB-100-00	1

### Triumph Auto Lifts

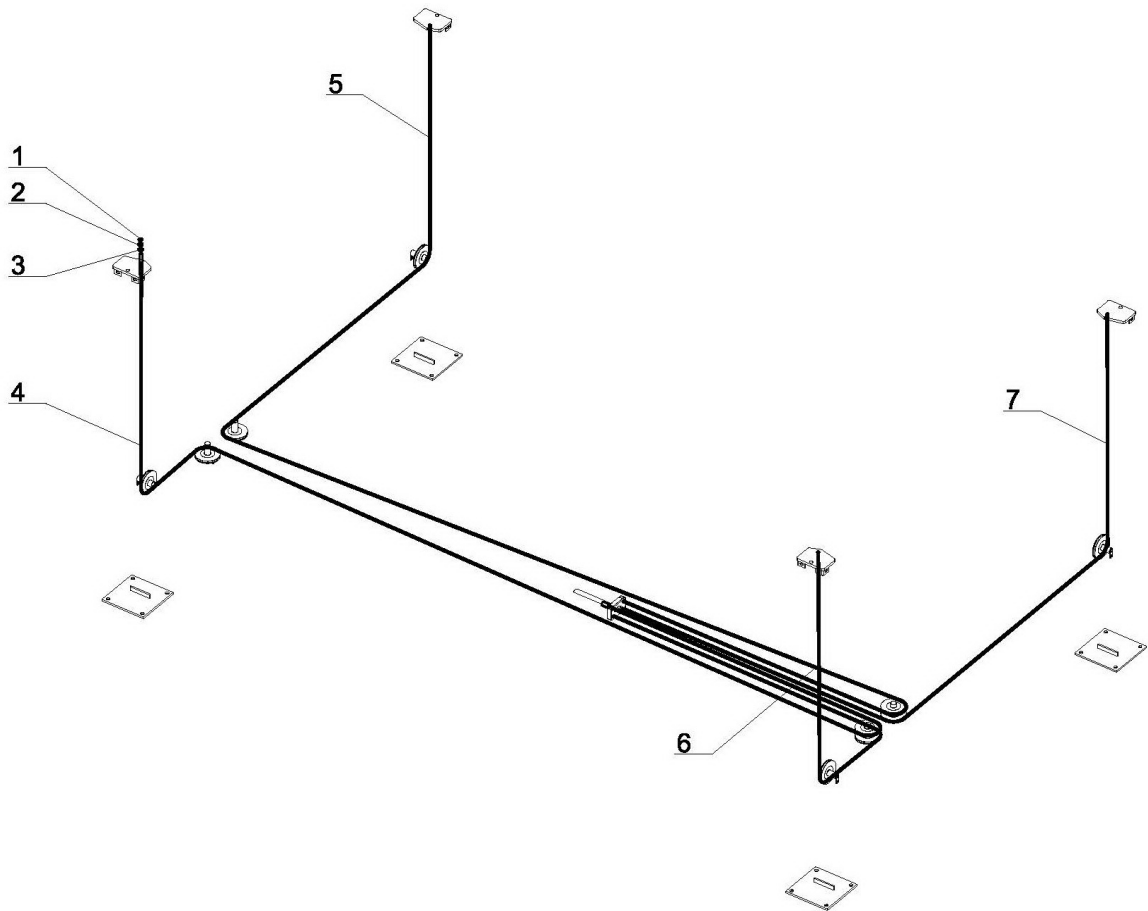
20	Blocking wheel gasket	ON-7440PB-000-02	2
21	Main platform	ON-7445PB-500-00	1
22	Bolt M8 × 25	GB/T 5781	4
23	Nut M8	GB/T 6170	4
24	Flat cushion 8	GB/T 95	4
25	Spring pad 8	GB/T 93	4
26	pumping station	ON-7440PB-000-00II	1
27	Bolt M10 × 25	GB/T 5781	16
28	Flat pad 10	GB/T 95	16
29	Spring pad 10	GB/T 93	16
30	beam	ON-7445PB-400-00	2
31	pedal	ON-7436P-000-01	2
32	Bolt M10 × 35	GB/T 5781	4
33	Flat pad 10	GB/T 95	4
34	Spring pad 10	GB/T 93	4
35	Pedal seat plate	ON-7440PB-070-00	1
35	Pedal seat plate	ON-7445PB-070-00	1
36	Expansion screw M16 × 150		16

## Triumph Auto Lifts



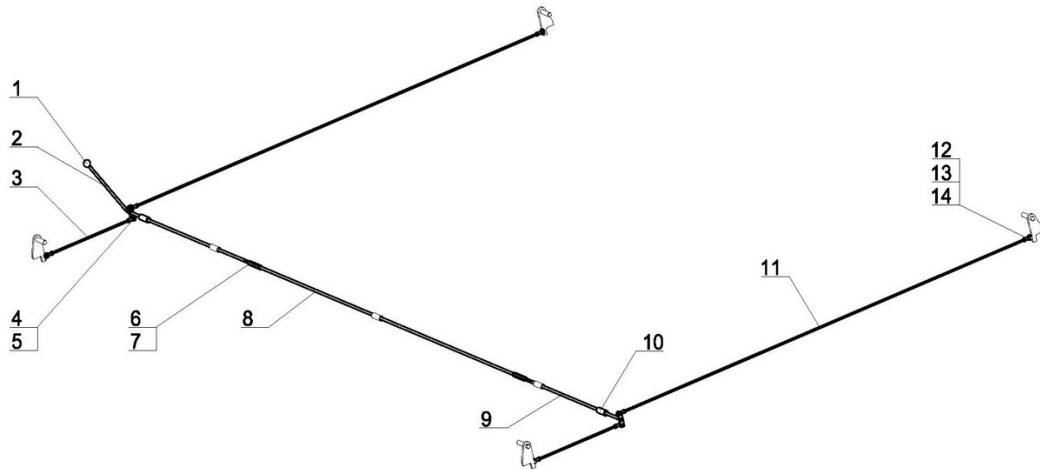
#	Name	Code	QTY.
1	Composite gasket G1/4		1
2	Pump connector		1
3	High pressure oil pipe 2000	ON-7436P-000-08	1
4	Thin Nut G1/4		1
5	Adjacent right angle pipe joint	ON-7224E-A4-B15	1
6	High pressure oil pipe 1780	ON-7440PB-000-14	1
7	Oil cylinder joint	ON-7436P-000-30	1

## Triumph Auto Lifts



#	Name	Code	QTY.
1	Thin nut M20	GB/T 6172	4
2	Nut M20	GB/T 6170	4
3	Shim 20	GB/T 95	4
4	Wire Rope III L=8415 mm	ON-7445PB-000-12	1
5	Wire Rope IV L=9925 mm	ON-7445PB-000-13	1
6	Wire rope I L=3500 mm	ON-7445PB-000-10	1
7	Wire Rope II L=5505 mm	ON-7445PB-000-11	1

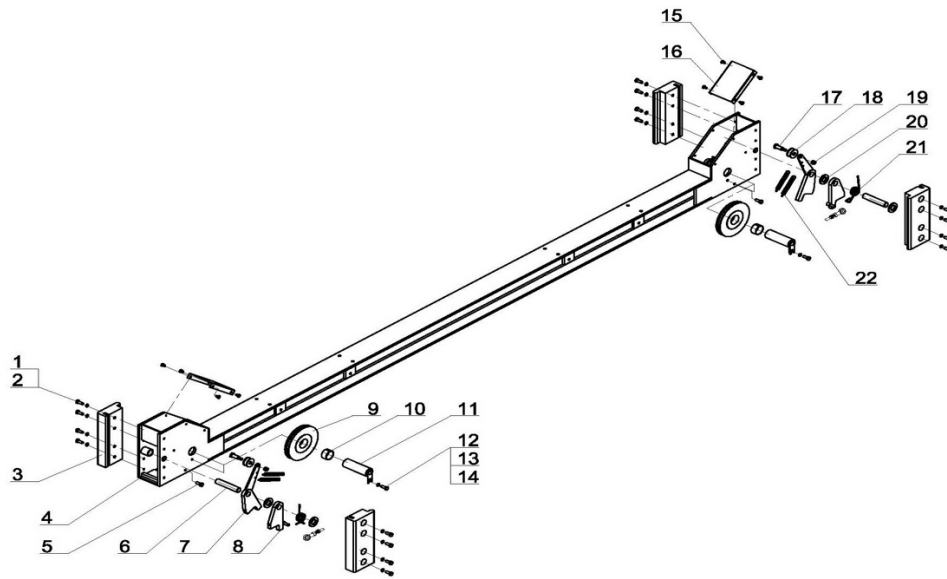
## Triumph Auto Lifts



#	Name	Code	QTY.
1	Handle ball M10 × 30	ON-7224T-A2-B3-C6	1
2	Handle rod	ON-7445PB-061-00	1
3	Short pull rod	ON-7445PB-000-03	2
4	Bolt M8 × 30	GB/T 5781	4
5	Self locking nut M8	GB/T 889.1	4
6	Connecting screw sleeve	ON-7436P-060-02	2
7	Nut M12	GB/T 6170	4
8	Double headed screw	ON-7440PB-000-05	1
9	connecting rod	ON-7440PB-091-00	1
10	bushing	ON-7440PB-000-09	2
11	Long pull rod	ON-7445PB-000-04	2
12	Rod end joint bearing M8	SI8T/K	8
13	Nut M8	GB/T 6170	8
14	Self locking nut M8	GB/T 889.1	4



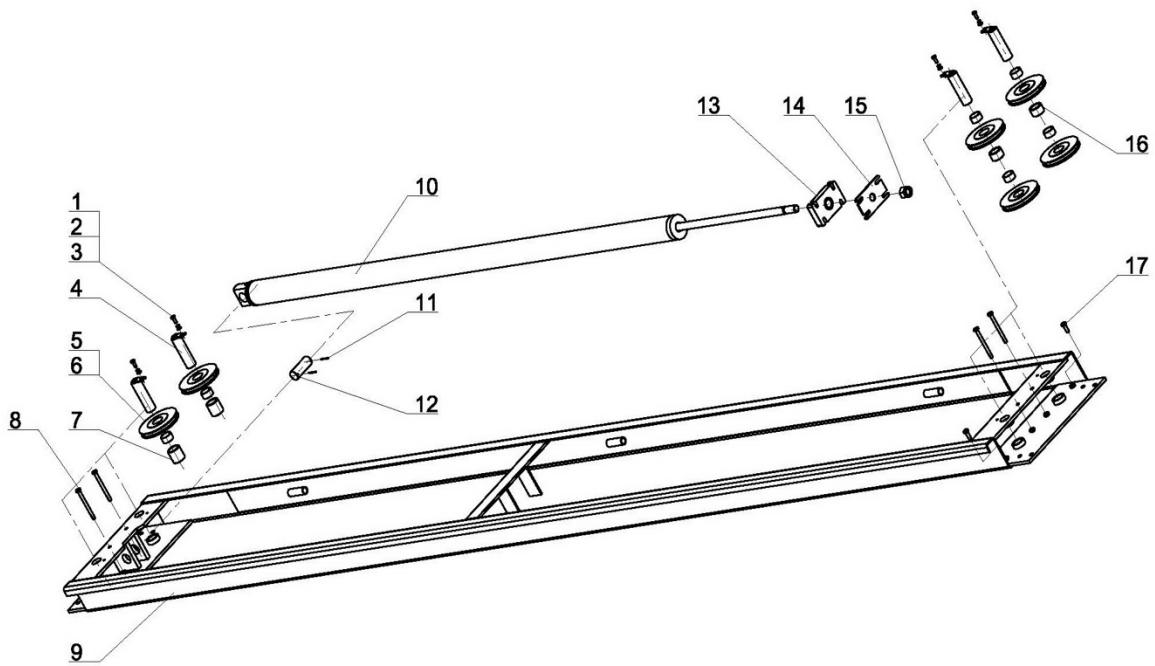
## Triumph Auto Lifts



#	Name	Code	QTY.
1	Bolt M8 × 30	GB/T 5781	32
2	Flat cushion 8	GB/T 95	32
3	Slider	ON-7445PB-400-01	8
4	Crossbeam body	ON-7445PB-410-00	2
5	Bolt M8 × 50	GB/T 5781	4
6	Safety shaft	ON-7440PB-400-02	4
7	Rope breakage insurance	ON-7436PB-430-00	4
8	Manual insurance	ON-7440PB-420-00	2 each
9	Wire rope pulley	ON-7445PB-000-01	4
10	Composite liner 3520		4
11	Steel wire rope wheel axle	ON-7440PB-440-00	4
12	Bolt M8 × 25	GB/T 5781	4
13	Flat cushion 8	GB/T 95	4

### Triumph Auto Lifts

14	Spring pad 8	GB/T 93	4
15	Cross slot screw M6 × 12	GB/T 818	16
16	Shield	ON-7440PB-400-03	4
17	Shoulder screw	ON-7440PB-430-00	4
18	Nylon wheels	ON-7436PB-400-04	4
19	Self locking nut M8	GB/T 889.1	4
20	Flat cushion 20	GB/T 95	16
21	Torsion spring	ON-7436PB-400-02	2 each
22	Tension spring	ON-7436PB-400-08	8

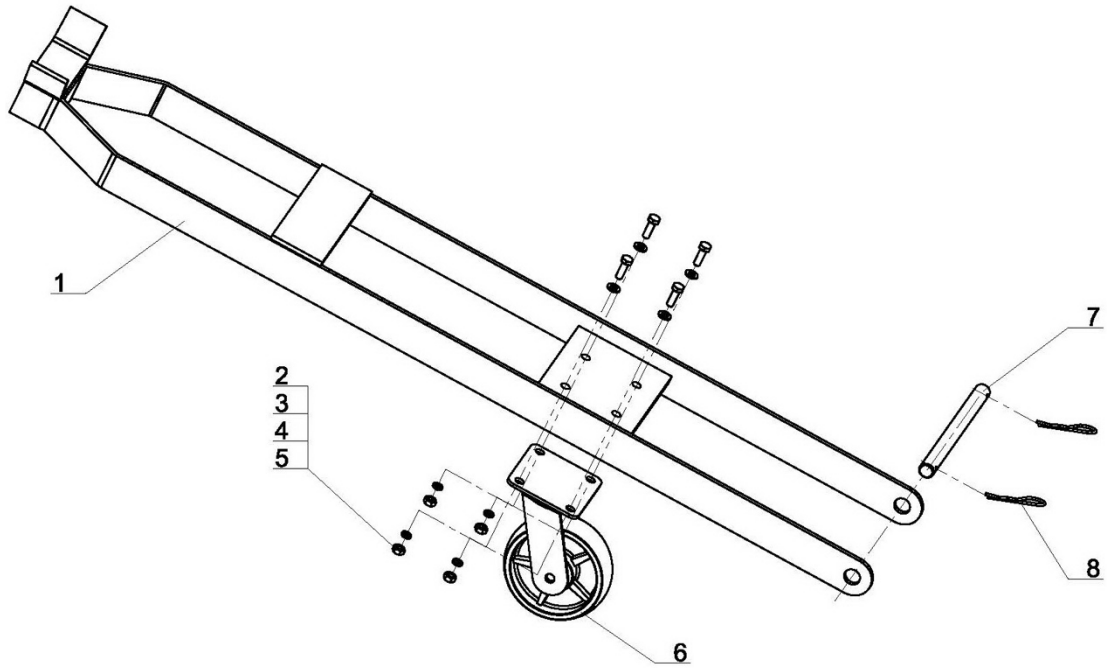


#	Name	Code	QTY.
1	Bolt M8 × 25	GB/T 5781	4
2	Flat cushion 8	GB/T 95	4

Triumph Auto Lifts

3	Spring pad 8	GB/T 93	4
4	Steel wire rope wheel axle	ON-7440PB-040-00	4
5	Wire rope pulley	ON-7445PB-000-01	6
6	Composite liner 3520		6
7	Pipe sleeve 45	ON-7440PB-000-07	2
8	Bolt M10 × 120	GB/T 5780	4
9	Main platform	ON-7445PB-500-00	1
10	Oil cylinder 70/25/2050	ON-7440PB-700-00	1
11	Split pin 4x50	GB/T 91	2
12	Cylinder shaft	ON-7436P-000-13	1
13	Steel wire rope seat	ON-7440PB-030-00	1
14	Wire rope fixing plate 2	ON-7436P-000-12	1
15	Self locking nut M24	GB/T 889.1	1
16	Pipe sleeve 27	ON-7440PB-000-08	2
17	Bolt M10 × 50	GB/T 5780	2

## Triumph Auto Lifts



#	Name	Code	QTY.
1	Wheel fork	ON-7440PB-610-00	4
2	Bolt M10 × 25	GB/T 5781	16
3	Nut M10	GB/T 6170	16
4	Flat pad 10	GB/T 95	16
5	Spring pad 10	GB/T 93	16
6	Universal wheel		4
7	Pin shaft 245	ON-7440PB-620-01	4
8	R-shaped pin 3.5 × 70		8